

Der Partner in
Ihrer Nähe

Hedemann GmbH
Oldenburger Straße 28
D-26639 Wiesmoor

Tel.: +49 (0) 49 44 / 14 50
Mail: kontakt@hedemann-stapler.de
Web: www.hedemann-stapler.de



X Series IC Forklift Truck

with capacities of 12,000 to 16,000kg



HANGCHA GROUP CO., LTD.

Factory site: 666 Xiangfu Road,
Hangzhou, Zhejiang, China (311305)

Tel: +86-571-88926735 88926755
Fax: +86-571-88926789 88132890

sales@hcforklift.com
www.hcforklift.com



Follow us on
Facebook



Follow us on
YouTube



Follow us on
WeChat



Download "Hangcha
Forklift" App



ISO 45001
ISO 45001:2018



ISO 14001
ISO 14001:2015



ISO 9001
ISO 9001:2015



HANGCHA trucks conform
to the European Safety
Requirements.

HANGCHA GROUP CO., LTD. reserves the right to make any changes without notice concerning colors, equipment, or specifications detailed in this brochure, or to discontinue individual models. The colors of trucks, delivered may differ slightly from those in brochures.

2025 VERSION 2/COPYRIGHT 2025/05



Hedemann GmbH
Oldenburger Straße 28
D-26639 Wiesmoor

Tel.: +49 (0) 49 44 / 14 50
Mail: kontakt@hedemann-stapler.de
Web: www.hedemann-stapler.de

*Der Partner in
Ihrer Nähe*

Hedemann GmbH
Oldenburger Straße 28
D-26639 Wiesmoor

Tel.: +49 (0) 49 44 / 14 50
Mail: kontakt@hedemann-stapler.de
Web: www.hedemann-stapler.de



HEDEMANN
Gabelstapler

X SERIES IC FORKLIFT TRUCK

Professional industrial exterior design, high product recognition, compact and smooth modelling, modern industrial aesthetics. The concealed arrangement of exposed parts makes the exterior cleaner and neater.

The key parts of the old products have been verified to be reliable and durable by the market for many years, and with modular and standardized design, the main parts are verified step by step in advance, so that the vehicle is highly mature. Structural parts such as the frame, mast, etc. are upgraded and optimized on the basis of existing products, and are verified through CAE analysis and testing.

The degree of digitization is improved. With bus architecture and several built-in diagnosis and management functions, a central controller is added to the vehicle to enable a central fault alarm, simplified operations, easy diagnosis and flexible configuration of electrical functions.



Der Partner in
Ihrer Nähe

Hedemann GmbH
Oldenburger Straße 28
D-26639 Wiesmoor

Tel.: +49 (0) 49 44 / 14 50
Mail: kontakt@hedemann-stapler.de
Web: www.hedemann-stapler.de

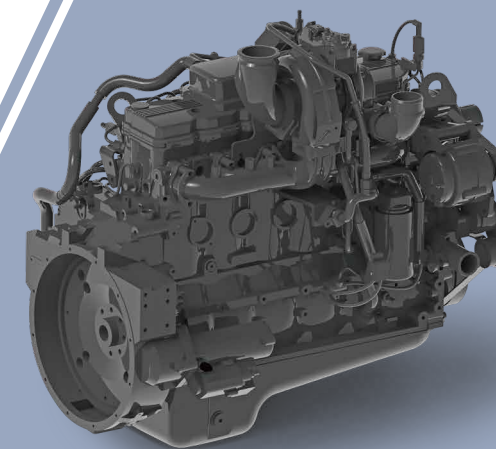


STAGE V & TIER 4F

HANGCHA with you at every stage

Efficient, reliable solutions for your demands

With Hangcha you can meet all Stage V/Tier 4f emissions standards which provides customer demands for value, innovation and performance. The technologies include common rail fuel systems, Turbocharged Inter-cooled selective catalytic reduction (SCR), diesel oxidation catalysts (DOC) and diesel particulate filters (DPF). Designed and optimised to every engine model, our forklift truck maximises efficiency and reliability.



CUMMINS B6.7



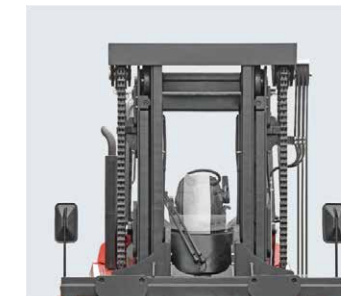
OKAMURA gear box with micro-electronic control provides for two-shift power shifting, travelling is stable and accurate.



Optional imaging system with front and rear camera, increasing the safety greatly.



Thanks to the unique design, cab can be tilt without any tools, major service items can be reached easily by tilting the cabin, maximized access is possible.



Excellent all round visibility is achieved by the overall design.



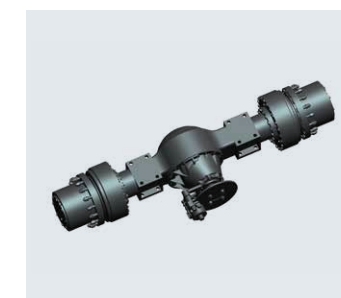
Battery compartment is easy to open for easy maintenance.



The newly designed LCD instrument has more comprehensive functions and more stable performance. It can display the important information such as truck status and engine faults... So that the operator can understand the truck status more intuitively and facilitate maintenance.



Suspended seat with fingertip system that can be easily adjusted to suit each customer.



Heavy-duty traction axle, two-stage deceleration; Wet brake, maintenance-free; Hydraulic release spring action parking brake, safe and reliable.



Comfort

The compact integral joystick enables accurate remote control. The optimized hydraulic braking curve enables smooth easy-to-control braking. The suspended seat and ergonomically-movable multidirectional adjustable console enable comfortable control.

High Performance

The configuration is improved. A new cab, wet braking drive axle, hydraulic adjustable fork, LCD bus instruments, cooling and heating air conditioner, vehicle LED lights, snail horn and reversing radar and other equipment are provided for the standard configuration. With reserved design, the optional equipment is greatly increased.

Performance is improved and the average operation efficiency is increased by more than 10%.

The overturnable cab, wide-opened hood, devices enable easy access to the oil and water, and the easy-to-dismount large electric control cover plate, make maintenance more convenient.



Fully-suspended all-round vision cab

The new fully-suspended all-round vision cab (HPC) and optimized vehicle outline enable all-round sight and view. Performance of the air conditioner is improved to enable uniform conditioned air blowing from the air outlet and a strong cooling effect. The waterproof, dust-proof, heatproof, soundproof, noise-reducing sealing design improves driving comfort. The molded interior parts enable a more comfortable feel. The integral frame is constituted by profiled steel pipes. The structural parts have higher strength.



Comfort

The fully-suspended seat, ergonomic steering wheel and control platform make driving a pleasure.



Safety

A wide view reduces hidden safety hazards caused by blind corners when the vehicle is driving. A spindle and a hydraulic self-locking mechanism are used to connect the cab and the vehicle frame. When the electric or manual hydraulic pump is started, the hydraulic lock is automatically opened and at the same time, the hydraulic cylinder at the bottom of the cab sticks out so that the cab is flipped sideways over the center of gravity, improving the dimension. Safety and convenience of maintenance are improved.



Ergonomic Design

The steering wheel, joystick, control buttons, pedals and seat are all ergonomically designed for easier operation.



Overall Effect

The fully enclosed suspended cab has a curved front window that enables a large viewing angle and has its sides cut in a way different from that for the prior window. The cab doors are all glass, which increases the overall visual range. The exterior design of the whole vehicle is at the forefront of the development of forklift design. Being sturdy and elegant in appearance, the vehicle is practical and stylish. The integrated interior design is simple and comfortable, presenting visual enjoyment to the driver.

Der Partner in
Ihrer Nähe

Hedemann GmbH
Oldenburger Straße 28
D-26639 Wiesmoor

Tel.: +49 (0) 49 44 / 14 50
Mail: kontakt@hedemann-stapler.de
Web: www.hedemann-stapler.de



Features

Transmission	Standard	Options
Pneumatic tyre	●	
Solid tyre		○
Steering system		
Fully hydraulic power steering	●	
Centralized lubrication system (machine)		○
Power system		
Extended exhaust pipe	●	
Lockable fuel cap		○
Spark arrester		○
Truck		
Tow pin	●	
Electrostatic discharge chain		○
Rear-view mirror on right & left mudguards	●	
Operating system		
Integrated joystick	●	
Adjustable steering column	●	
Adjustable armrest	●	
Hydraulic system		
Four-way hydraulic valve	●	
Cab		
Cabin	●	
Climate control system (air-conditioning and heater)	●	
Manual tilting cabin	●	
Electric tilting cabin		○
Radio	●	
Sunshade	●	
USB charging interface	●	
Clothes hanger hook	●	
Reading light	●	
1 x 24V power supply		○
1 x 12V power supply		○
License plate frame		○
Fan	●	
Lifting components		
Duplex mast	●	
Standard lifting height	●	
Optional lifting height		○
Standard fork	●	
Other fork specifications		○
Fork hook on type		○
Hydraulic Fork Positioning	●	
Independently-adjustable fork	●	
Built in Sideshift		○
Integrated sideshift		○
Other		
Standard color	●	
User defined colour		○
Fire extinguisher (2kg/4kg)		○
Vehicle toolkit	●	

Electrical System	Standard	Options
Operator Presense System (OPS) with buzzer	●	
LCD display screen	●	
Main power switch	●	
Emergency power off switch	●	
Maintenance-free 24V lead acid battery	●	
Reverse buzzer	●	
High decible horn	●	
LED lights (entire vehicle)	●	
2 x Working light on front mudguard	●	
2 x Front working light on top of cabin	●	
2 x Rear working light on top of cabin	●	
2 x Working light on both sides of mast		○
Reverse sensor	●	
Rearview camera system	●	
Rearview camera system with memory		○
Front & rearview camera system		○
Front & rearview camera system with memory		○
4 directions camera system with single display		○
4 directions camera recording system with single display		○
In cabin CCTV		○
Rear blue safety light		○
Front and rear blue safety light		○
Three sided blue danger zone light		○
Overspeed alarm		○
Voice reverse alarm		○
Automatic fire suppression system		○
Two-way radio		○
Weight indicator in display		○
Flashing warning light (non rotating) with control switch	●	
Tyre pressure monitoring		○
On-board diagnostics system	●	
Engine fault alarm	●	
Engine oil pressure alarm indicator	●	
Air filter warning indicator	●	
Water temperature indicator	●	
Hour meter	●	
Battery charge indicator	●	
Low hydraulic pressure alarm indicator	●	
Hydraulic oil filter warning indicator	●	
Oil gauge	●	
Fuel-water separator warning indicator	●	
Oil temperature gauge	●	
Pre-heat indicator	●	
Drive mode indicator	●	
Parking brake indicator	●	
Service indicator	●	

Der Partner in
Ihrer Nähe

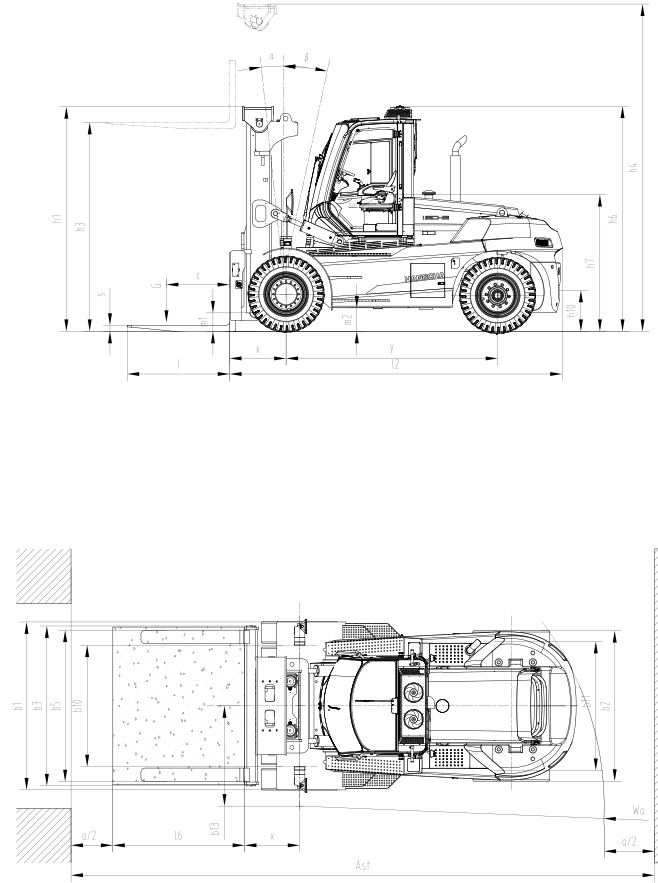
Hedemann GmbH
Oldenburger Straße 28
D-26639 Wiesmoor

Tel.: +49 (0) 49 44 / 14 50
Mail: kontakt@hedemann-stapler.de
Web: www.hedemann-stapler.de



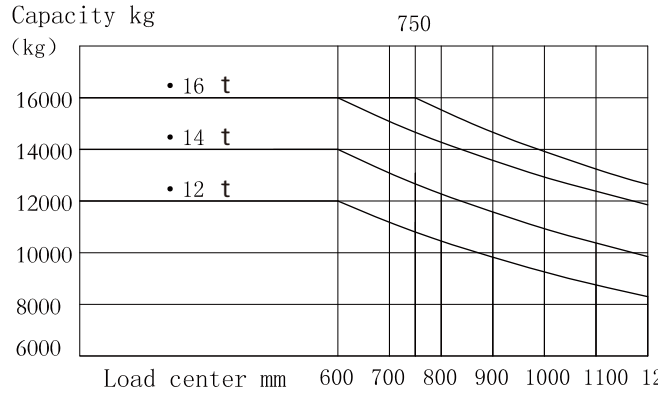
X Series IC Forklift Truck 12-16t Specification

Distinguishing mark	1.1	Manufacturer	HANGCHA GROUP CO.,LTD.									
	1.2	Manufacturer's type designation	CPCD120-XXRW25B	CPCD120-XXRH13B	CPCD120-XXRH13B	CPCD140-XXRW25B	CPCD140-XXRH13B	CPCD160-XXRW25B	CPCD160-XXRW79B	CPCD160-XXRH13B	CPCD160-XXRMW25B	CPCD160-XXRMH13B
	1.3	Drive: electric (battery or mains), diesel, petrol, fuel gas	Diesel	Diesel	Diesel	Diesel	Diesel	Diesel	Diesel	Diesel	Diesel	Diesel
	1.4	Operator type: hand, pedestrian, standing, seated, order-picker	Seated	Seated	Seated	Seated	Seated	Seated	Seated	Seated	Seated	Seated
	1.5	Rated capacity/rated load	Q (kg)	12000	12000	12000	14000	14000	16000	16000	16000	16000
	1.6	Load centre distance	c (mm)	600	600	900	600	600	600	600	750	750
	1.8	Load distance, centre of drive axle to fork	x (mm)	745	745	835	825	825	825	825	880	880
	1.9	Wheelbase	y (mm)	3100	3100	3100	3100	3100	3100	3100	3300	3300
Weight	2.1	Service Weight	kg	16000	16000	16900	18200	18200	19200	19200	20300	20300
	3.1	Tyres: solid rubber, superelastic, pneumatic, polyurethane	Pneumatic	Pneumatic	Pneumatic	Pneumatic	Pneumatic	Pneumatic	Pneumatic	Pneumatic	Pneumatic	Pneumatic
Tyres, chassis	3.2	Tyre size, front	10.00-20-14PR	10.00-20-14PR	10.00-20-14PR	11.00-20-18PR	11.00-20-18PR	12.00-20-20PR	12.00-20-20PR	12.00-20-20PR	12.00-20-20PR	12.00-20-20PR
	3.3	Tyre size, rear	10.00-20-14PR	10.00-20-14PR	10.00-20-14PR	11.00-20-18PR	11.00-20-18PR	12.00-20-20PR	12.00-20-20PR	12.00-20-20PR	12.00-20-20PR	12.00-20-20PR
	3.5	Wheels, number front / rear (x = driven wheels)	4×/2	4×/2	4×/2	4×/2	4×/2	4×/2	4×/2	4×/2	4×/2	4×/2
	3.6	Tread, front	b10 (mm)	1780	1780	1780	1780	1780	1780	1780	1780	1780
Dimension	3.7	Tread, rear	b11 (mm)	1890	1890	1890	1890	1890	1890	1890	1890	1890
	4.1	Tilt of mast/fork carriage forward/backward	α/β(°)	6/12	6/12	6/12	6/12	6/12	6/12	6/12	6/12	6/12
	4.2	Height, mast lowered	h1 (mm)	3180	3180	3270	3270	3290	3290	3290	3290	3290
	4.3	Free lift	h2 (mm)	0	0	0	0	90	0	0	0	0
	4.4	Lift	h3 (mm)	3000	3000	3000	3000	3000	3000	3000	3000	3000
	4.5	Height, mast extended	h4 (mm)	4695	4695	4790	4790	4790	4790	4790	4790	4790
	4.7	Height of overhead cabin	h6 (mm)	3265	3265	3265	3280	3300	3300	3300	3300	3300
	4.8	Seat height relating to SIP	h7 (mm)	1930	1930	1965	1945	1965	1965	1965	1965	1965
	4.12	Coupling height	h10 (mm)	600	600	600	615	635	635	635	635	635
	4.19	Overall length	l1 (mm)	6190	6190	6580	6260	6380	6380	6380	6930	6930
	4.20	Length to face of forks	l2 (mm)	4690	4690	4780	4760	4760	4880	4880	5130	5130
	4.21	Overall width	b1/b2 (mm)	2460/2200	2460/2200	2460/2200	2460/2200	2460/2200	2460/2200	2460/2200	2460/2200	2460/2200
	4.22	Fork dimensions	s/e/l (mm)	80×200×1520	80×200×1520	100×200×1820	90×200×1520	90×200×1520	90×200×1520	85×200×1520	90×200×1520	100×200×1820
	4.24	Fork-carriage width	b3 (mm)	2370	2370	2370	2370	2370	2370	2370	2370	2370
	4.25	Distance between fork-arms	bs (mm)	520/2200	520/2200	520/2200	520/2200	520/2200	520/2200	520/2200	520/2200	520/2200
	4.31	Ground clearance, laden, below mast	m1 (mm)	250	250	250	250	270	270	270	270	270
	4.32	Ground clearance, centre of wheelbase	m2 (mm)	310	310	310	325	345	345	345	345	345
	4.34.1	Aisle width with load length 1500mm	As1 (mm)	6800	6800	7190	6875	6875	6975	6975	7630	7630
	4.34.2	Aisle width with load length 1800mm	As1 (mm)	7100	7100	7190	7175	7175	7275	7275	7630	7630
Performance data	4.35	Turning radius	Wα (mm)	4350	4350	4350	4450	4450	4450	4450	4750	4750
	4.36	Minimum pivoting point distance	b13 (mm)	1480	1480	1480	1480	1480	1480	1480	1480	1480
	5.1	Travel speed, laden/unladen	km/h	24/28	24/28	24/28	25/29	25/29	25/29	22/27	25/29	25/29
	5.2	Lift speed, laden/unladen	m/s	0.34/0.36	0.34/0.36	0.34/0.36	0.35/0.38	0.35/0.38	0.35/0.38	0.32/0.35	0.35/0.38	0.35/0.38
	5.3	Lowering speed, laden/unladen	m/s	0.45/0.40	0.45/0.40	0.45/0.40	0.45/0.40	0.45/0.40	0.45/0.40	0.45/0.35	0.45/0.40	0.45/0.40
	5.5	Drawbar pull, laden/unladen	N	115000	115000	115000	115000	115000	115000	100000	115000	115000
	5.7	Gradeability, laden/unladen	%	20	20	20	20	20	20	20	20	20
	5.10	Service brake		Wet disc brake	Wet disc brake	Wet disc brake	Wet disc brake	Wet disc brake	Wet disc brake	Wet disc brake	Wet disc brake	Wet disc brake
		Parking brake		spring applied, hydraulic release multi-disc brake			spring applied, hydraulic release multi-disc brake			spring applied, hydraulic release multi-disc brake		
Engine	7.1	Engine manufacturer/type	QSB 6.7-C160	B6.7	B6.7	QSB 6.7-C160	B6.7	QSB 6.7-C160	QSB6.7	B6.7	QSB 6.7-C160	B6.7
	7.2	Engine power	kW	119	116	116	119	118	118	116	119	116
	7.3	Rated speed	r/min	2300	2200	2200	2300	2200	2300	2200	2300	2200
	7.4	Number of cylinders/displacement	(-)/ (cm³)	6/6700	6/6700	6/6700	6/6700	6/6700	6/6700	6/6700	6/6700	6/6700
		Emission Std.	StageIIIA/Tier3	Stage V/Tier 4	Stage V/Tier 4	StageIIIA/Tier3	Stage V/Tier 4	StageIIIA/Tier3	StageIV/Tier4F	Stage V/Tier 4	StageIIIA/Tier3	Stage V/Tier 4
	7.9	Vehicle electrical system voltage	V	24	24	24	24	24	24	24	24	24
	7.10	Battery voltage/nominal capacity	V/Ah	2×12/120	2×12/120	2×12/120	2×12/120	2×12/120	2×12/120	2×12/120	2×12/120	2×12/120
		Rated torque	N·m/r/min	731/1500	746/1300	746/1300	746/1300	746/1300	746/1300	746/1300	731/1500	746/1300
		Transmissions Manufacturer		Okamura	Okamura	Okamura	Okamura	Okamura	Okamura	Okamura	Okamura	Okamura
		Transmissions Type		Y63270X	Y63270X	Y63270X	Y63270X	Y63270X	Y63270X	Y63270X	Y63270X	Y63270X
Additional data		Stage FWD/RVS		2/1	2/1	2/1	2/1	2/1	2/1	2/1	2/1	2/1
	10.1	Operating pressure for attachments	Mpa	15	15	15	15	15	15	15	15	15
	10.2	Oil volume for attachments	l/min	110	110	110	110	110	110	110	110	110
	10.3	Hydraulic Tank - capacity (drain & refill)	l/iter	320	320	320	320	320	320	320	350	350
	10.4	Fuel tank capacity	l/iter	320	320	320	320	320	320	320	370	370
	10.7	Sound pressure level at the driver's seat	dB (A)	78	78	78	78	78	78	78	78	78



X Series IC Forklift Truck 12-16t Mast:(Pneumatic)

Type	Model	Max. fork height	Overall height				Tilt Range	Capacity							
			Lowered		Extended		F/R	Load capacity at 600mm		Load capacity at 600mm		Load capacity at 600mm		Load capacity at 750mm	
			12t	14t/16t	12t	14t/16t		12t	14t	16t	16t				
		mm	mm	mm	mm		kg	kg	kg	kg					
Wide view mast	GXR120/160/161M300	3000	3180	3290	4695	4790	6/12	12000	14000	16000	16000				
	GXR120/160/161M330	3300	3330	3440	4995	5090	6/12	12000	14000	16000	16000				
	GXR120/160/161M360	3600	3480	3590	5295	5390	6/12	12000	14000	16000	16000				
	GXR120/160/161M400	4000	3680	3790	5695	5790	6/12	12000	14000	16000	16000				
	GXR120/160/161M430	4300	3880	3990	6030	6140	6/12	12000	14000	16000	16000				
	GXR120/160/161M450	4500	3980	4090	6230	6340	6/12	12000	14000	16000	16000				
	GXR120/160/161M480	4800	4130	4240	6530	6640	6/6	12000	14000	16000	16000				
	GXR120/160/161M500	5000	4230	4340	6730	6840	6/6	12000	14000	16000	16000				
	GXR120/160/161M550	5500	4530	4640	7280	7390	3/6	10500	12500	14500	14500				
	GXR120/160/161M600	6000	4780	4890	7780	7890	3/6	9000	11000	13000	13000				
GXR120/160/161M650	6500	5080	5190	8330	8440	3/6	7500	9500	11500	11500					



Der Partner in
Ihrer Nähe

Hedemann GmbH
Oldenburger Straße 28
D-26639 Wiesmoor

Tel.: +49 (0) 49 44 / 14 50
Mail: kontakt@hedemann-stapler.de
Web: www.hedemann-stapler.de



X Series Heavy IC Forklift Trucks

with capacities of 14,000 to 18,000kg



HANGCHA GROUP CO., LTD.

Factory site: 666 Xiangfu Road,
Hangzhou, Zhejiang, China (311305)

Tel: +86-571-88926735 88926755
Fax: +86-571-88926789 88132890

sales@hcforklift.com
www.hcforklift.com



Follow us on
Facebook



Follow us on
YouTube



Follow us on
WeChat



Download "Hangcha
Forklift" App



ISO 45001:2018



ISO 14001:2015



ISO 9001:2015



HANGCHA trucks conform
to the European Safety
Requirements.

2025 VERSION 2/COPYRIGHT 2025/05

HANGCHA GROUP CO., LTD. reserves the right to make any changes without notice concerning colors, equipment, or specifications detailed in this brochure, or to discontinue individual models. The colors of trucks, delivered may differ slightly from those in brochures.

The World of Hangcha



Der Partner in
Ihrer Nähe

Hedemann GmbH
Oldenburger Straße 28
D-26639 Wiesmoor

Tel.: +49 (0) 49 44 / 14 50
Mail: kontakt@hedemann-stapler.de
Web: www.hedemann-stapler.de



X SERIES HEAVY IC FORKLIFT TRUCKS

The heavy load X series is extension of the new series of internal combustion counterbalance forklift truck developed by Hangcha independently, adopting the world advanced technologies based on the original products. Through the comprehensive upgrading of appearance molding, energy conservation, environmental protection, comfort, security and reliability, it will become the world-class forklift truck which can meet your overall demands.

CHARACTERISTICS

The truck has professional and entirely-new appearance, has great identifiable degree, has simple and smooth profiling and has great industrial aesthetics. The exposed parts are arranged in concealed manner, and the appearance is more concise.

The key parts are products of internationally well-known brands, have been utilized in the products of previous models, have been validated by the market, and are reliable and durable; The modular and standard design is applicable, the main parts are validated in advance and by steps, the truck has great maturity.



Der Partner in
Ihrer Nähe

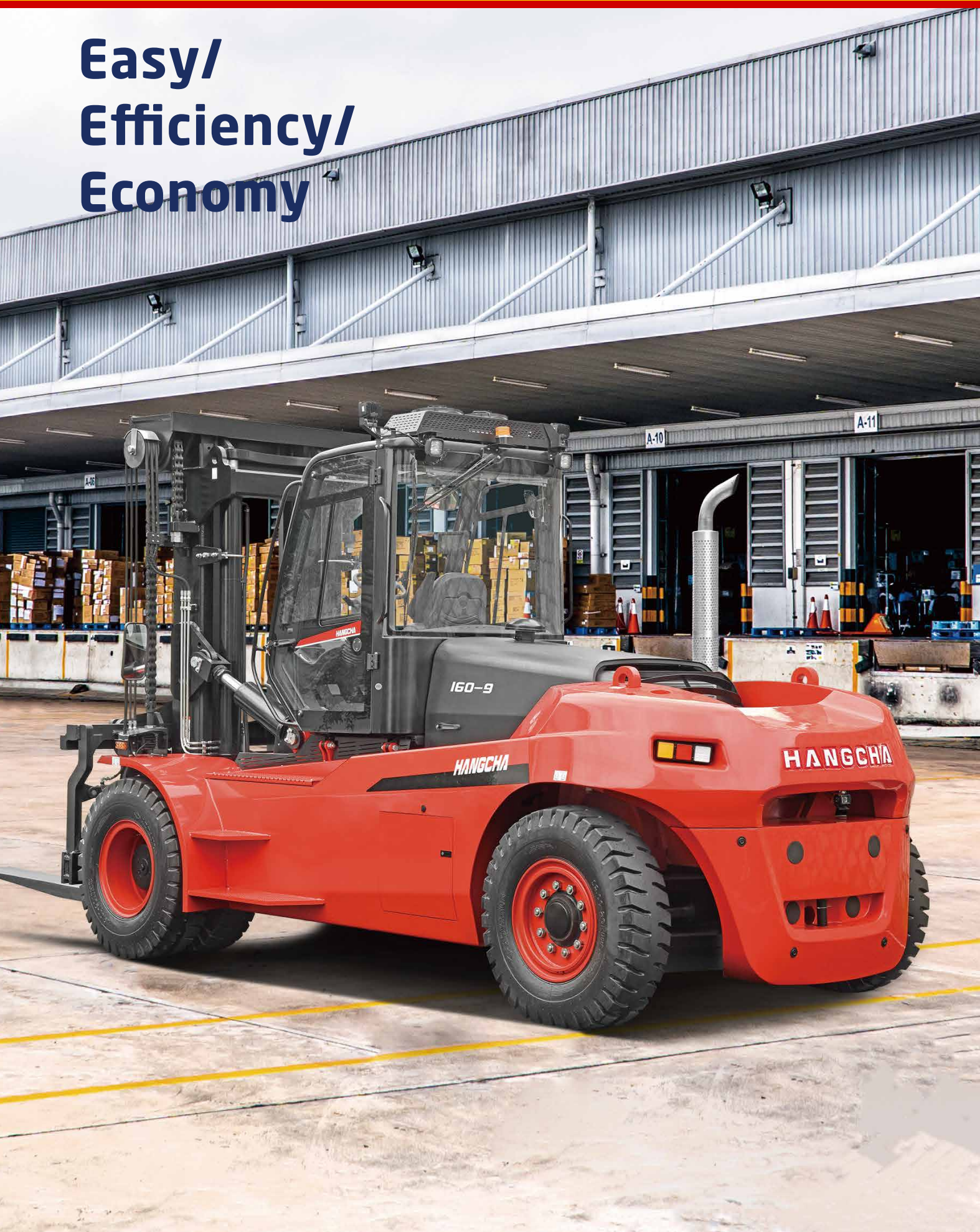
Hedemann GmbH
Oldenburger Straße 28
D-26639 Wiesmoor

Tel.: +49 (0) 49 44 / 14 50
Mail: kontakt@hedemann-stapler.de
Web: www.hedemann-stapler.de



HEDEMANN
Gabelstapler

Easy/ Efficiency/ Economy

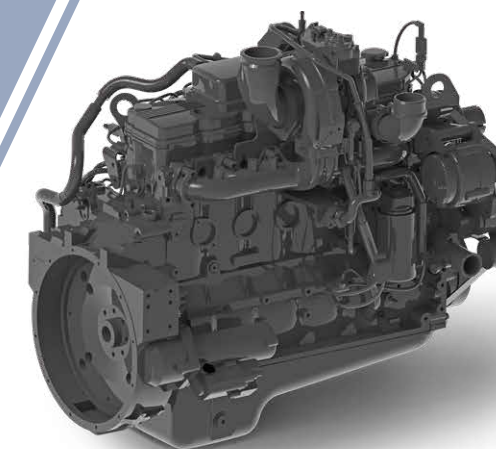


STAGE V & TIER 4F

HANGCHA with you at every stage

Efficient, reliable solutions for your demands

With Hangcha you can meet all Stage V/Tier 4f emissions standards which provides customer demands for value, innovation and performance. The technologies include common rail fuel systems, Turbocharged Inter-cooled selective catalytic reduction (SCR), diesel oxidation catalysts (DOC) and diesel particulate filters (DPF). Designed and optimised to every engine model, our forklift truck maximises efficiency and reliability.



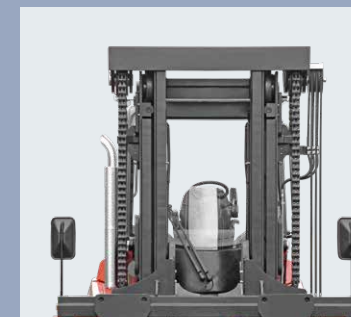
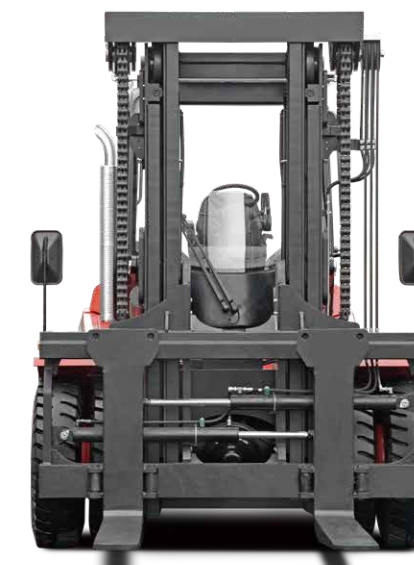
CUMMINS B6.7

High Performance

The performance is improved. The travel speed and lift speed are improved by 10%-20%. The body of the truck is reduced, and the flexibility is strengthened. Thanks to CAE (Computer Aided Engineering) technology, structural components are more balanced.

Comfort

With the new-style fully-suspended and overall-view cab. The profile of the truck is optimized; The vision is more excellent. The interior ornaments are formed, feeling is more comfortable; Shaped steel tube integral frame provides high strength and better sealing.



Excellent all round visibility is achieved by the overall design.



Thanks to the unique design, cab can be tilt without any tools, major service items can be reached easily by tilting the cabin, maximized access is possible.



Optional imaging system with front and rear camera, increasing the safety greatly.



ZF gear box with micro-electronic control provides for three-shift power shifting, travelling is stable and accurate.

Der Partner in
Ihrer Nähe

Hedemann GmbH
Oldenburger Straße 28
D-26639 Wiesmoor

Tel.: +49 (0) 49 44 / 14 50
Mail: kontakt@hedemann-stapler.de
Web: www.hedemann-stapler.de



Load sensing hydraulics provide high efficiency and energy saving, reducing hydraulic oil working temperature and also extending the life of hydraulic components and seals.



Anti-slip pedal provides high safety and easy maintenance.



Battery compartment is easy to open for easy maintenance.



The newly designed LCD instrument has more comprehensive functions and more stable performance. It can display the important information such as truck status and engine faults... So that the operator can understand the truck status more intuitively and facilitate maintenance.



Suspended seat with fingertip system that can be easily adjusted to suit each customer.



KESSLER heavy-duty traction axle, two-stage deceleration; Wet brake, maintenance-free; Hydraulic release spring action parking brake, safe and reliable.

Der Partner in
Ihrer Nähe

Hedemann GmbH
Oldenburger Straße 28
D-26639 Wiesmoor

Tel.: +49 (0) 49 44 / 14 50
Mail: kontakt@hedemann-stapler.de
Web: www.hedemann-stapler.de

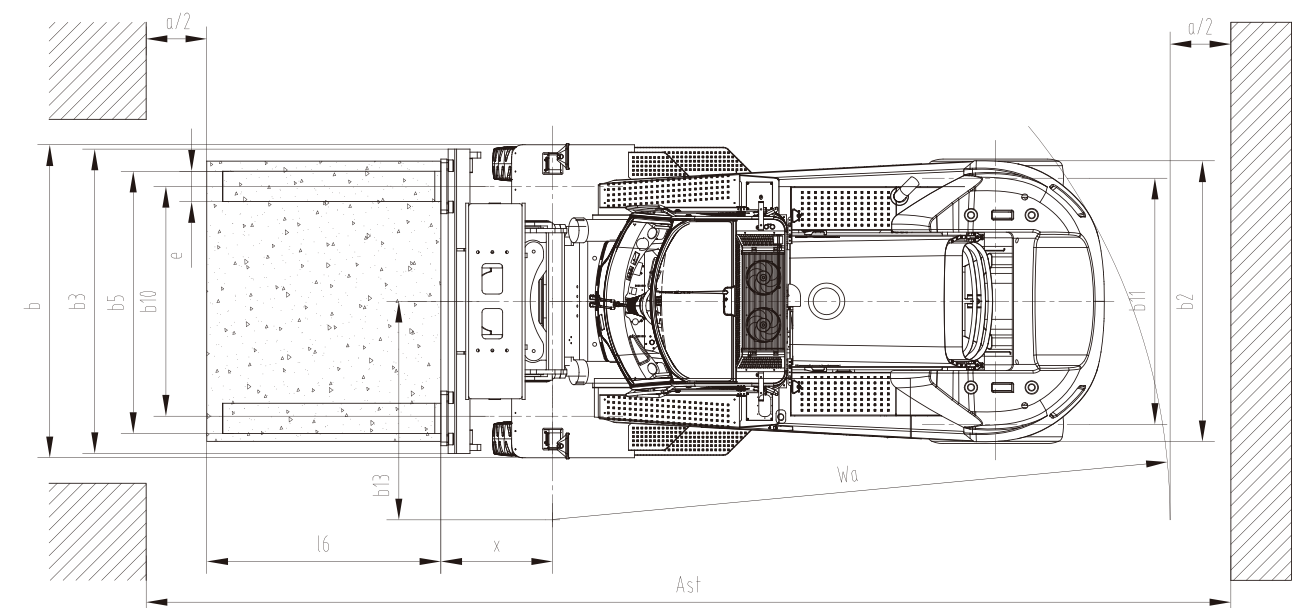
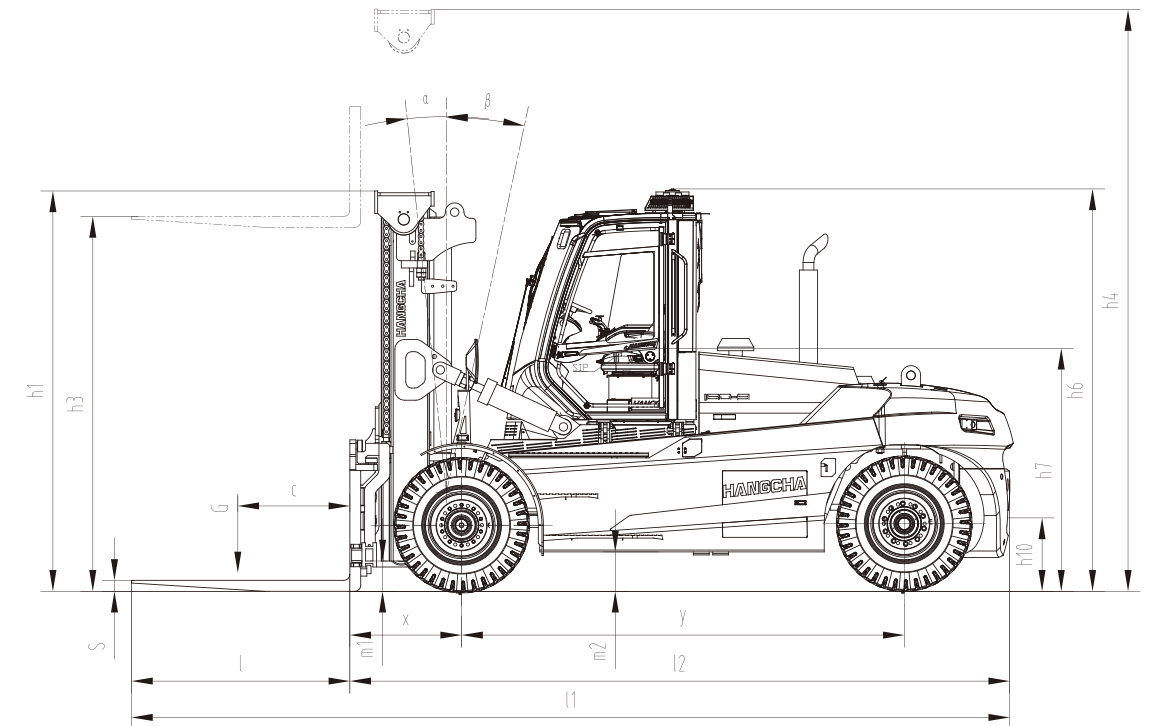


Reliability

Increased digitization, additional central controller, CAN-bus structure, built-in multiple diagnostic, management functions and fault alarm are convenient for diagnosis.

Precise Operation

Integrated fingertip system, pilot control, smart and accurate; Hydraulic brake curve optimization, smooth and easy control.



Der Partner in
Ihrer Nähe

Hedemann GmbH
Oldenburger Straße 28
D-26639 Wiesmoor

Tel.: +49 (0) 49 44 / 14 50
Mail: kontakt@hedemann-stapler.de
Web: www.hedemann-stapler.de



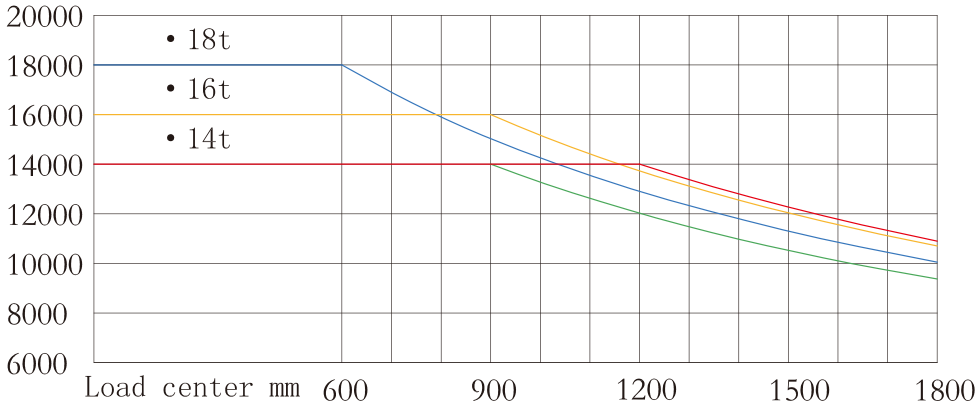
X Series 14-18t Diesel Counterbalanced Trucks

Distinguishing mark	1.1	Manufacturer		HANGCHA GROUP CO.,LTD.													
	1.2	Manufacturer's type designation		CPCD140-XRW25G	CPCD140-XRH9G	CPCD140-XRAW25G	CPCD140-XRAH9G	CPCD160-XRW25G	CPCD160-XRH9G	CPCD180-XRW25G	CPCD180-XRXH9G	CPCD160-XRAW25G	CPCD160-XRAH9G	CPCD180-XRW25G	CPCD180-XRH9G	CPCD180-XRAW25G	CPCD180-XRAH9G
	1.3	Drive: electric (battery or mains), diesel, petrol, fuel gas		Diesel		Diesel		Diesel		Diesel		Diesel		Diesel		Diesel	
	1.4	Operator type: hand, pedestrian, standing, seated, order-picker		Seated		Seated		Seated		Seated		Seated		Seated		Seated	
	1.5	Rated capacity/rated load	Q (kg)	14000		14000		16000		18000		16000		18000		18000	
	1.6	Load centre distance	c (mm)	900		1200		900		1200		1200		900		1200	
	1.8	Load distance, centre of drive axle to fork	x (mm)	920		920		920		920		940		940		960	
	1.9	Wheelbase	y (mm)	3650		3650		3650		3650		3750		3750		4000	
Weight	2.1	Service Weight	kg	20500		22100		21500		20900		24300		24500		25600	
Tyres, chassis	3.1	Tyres: solid rubber, superelastic, pneumatic, polyurethane		Pneumatic		Pneumatic		Pneumatic		Pneumatic		Pneumatic		Pneumatic		Pneumatic	
	3.2	tyre size	α/β(°)	12.00-20-20PR		12.00-20-20PR		12.00-20-20PR		12.00-20-20PR		12.00-24-20PR		12.00-24-20PR		12.00-24-20PR	
	3.3	tyre size		12.00-20-20PR		12.00-20-20PR		12.00-20-20PR		12.00-20-20PR		12.00-24-20PR		12.00-24-20PR		12.00-24-20PR	
	3.5	Wheels, number front / rear (x = driven wheels)		4×/2		4×/2		4×/2		4×/2		4×/2		4×/2		4×/2	
	3.6	Tread, front	b10 (mm)	1894		1894		1894		1894		2013		2013		2013	
	3.7	Tread, rear	b11 (mm)	2030		2030		2030		2200		2200		2200		2200	
	3.7	Tread, rear	b11 (mm)	2030		2030		2030		2200		2200		2200		2200	
Dimensions	4.1	Tilt of mast/fork carriage forward/backward		6/12		6/12		6/12		6/12		6/12		6/12		6/12	
	4.2	Height, mast lowered	h1 (mm)	3300		3300		3300		3300		3400		3400		3400	
	4.3	Free lift	h2 (mm)	90		95		90		90		110		110		110	
	4.4	Lift	h3 (mm)	3000		3000		3000		3000		3000		3000		3000	
	4.5	Height, mast extended	h4 (mm)	4800		4800		4800		4800		4900		4900		4900	
	4.7	Height of overhead cabin	h6 (mm)	3300		3300		3300		3300		3360		3360		3360	
	4.8	Seat height relating to SIP	h7 (mm)	2010		2010		2010		2010		2070		2070		2070	
	4.12	Coupling height	h10 (mm)	550		550		550		550		600		600		600	
	4.19	Overall length	l1 (mm)	7270		7910		7270		6970		8030		8030		8300	
	4.20	Length to face of forks	l2 (mm)	5470		5470		5470		5470		5590		5590		5860	
	4.21	Overall width	b1/b2(mm)	2580/2320		2580/2320		2580/2320		2580/2320		2700/2500		2700/2500		2700/2500	
	4.22	Fork dimensions	s/e/l (mm)	90×250×1800		95×250×2440		90×250×1800		90×250×1500		110×250×2440		110×250×1820		110×250×2440	
	4.24	Fork-carriage width	b3 (mm)	2510		2510		2510		2510		2640		2640		2640	
	4.25	Distance between fork-arms	b5 (mm)	750/2300		750/2300		750/2300		750/2300		750/2400		750/2400		750/2400	
	4.31	Ground clearance, laden, below mast	m1 (mm)	250		250		250		250		250		250		250	
	4.32	Ground clearance, centre of wheelbase	m2 (mm)	325		325		325		325		370		370		370	
	4.34.1	Aisle width with load length 1800mm	As1 (mm)	7870		8510		7870		7870		8040		8040		8220	
	4.34.2	Aisle width with load length 2400mm	As1 (mm)	8470		8510		8470		8470		8640		8640		8860	
	4.35	Turning radius	Ws (mm)	4950		4950		4950		4950		5100		5100		5460	
	4.36	Minimum pivoting point distance	b13 (mm)	1800		1800		1800		1800		1800		1800		1800	
Performance data	5.1	Travel speed, laden/unladen	km/h	26/30		26/30		26/30		26/30		26/29		26/29		26/29	
	5.2	Lift speed, laden/unladen	m/s	0.35/0.40		0.35/0.40		0.35/0.40		0.35/0.40		0.35/0.40		0.33/0.37		0.33/0.37	
	5.3	Lowering speed, laden/unladen	m/s	0.38/0.35		0.38/0.35		0.38/0.35		0.38/0.35		0.38/0.35		0.36/0.33		0.36/0.33	
	5.5	Drawbar pull, laden/unladen	N	75000/15000		150000/75000		150000/75000		150000/75000		125000/65000		125000/65000		125000/65000	
	5.7	Gradeability, laden/unladen	%	28		28		28		28		25		25		20	
	5.10	Service brake		Wet disc brake		Wet disc brake		Wet disc brake		Wet disc brake		Wet disc brake		Wet disc brake		Wet disc brake	
		Parking brake		spring applied, hydraulic release multi-disc brake		spring applied, hydraulic release multi-disc brake		spring applied, hydraulic release multi-disc brake		spring applied, hydraulic release multi-disc brake		spring applied, hydraulic release multi-disc brake		spring applied, hydraulic release multi-disc brake		spring applied, hydraulic release multi-disc brake	
Combustion-engine	7.1	Engine manufacturer/type		CUMMINS/QSB6.7-C190	CUMMINS/B6.7	CUMMINS/QSB6.7-C190	CUMMINS/B6.7	CUMMINS/QSB6.7-C190	CUMMINS/B6.7	CUMMINS/QSB6.7-C190	CUMMINS/B6.7	CUMMINS/QSB6.7-C190	CUMMINS/B6.7	CUMMINS/QSB6.7-C190	CUMMINS/B6.7	CUMMINS/QSB6.7-C190	CUMMINS/B6.7
		Emission STD		Stage 3A/Tier 3	Stage V/Tier 4	Stage 3A/Tier 3	Stage V/Tier 4	Stage 3A/Tier 3	Stage V/Tier 4	Stage 3A/Tier 3	Stage V/Tier 4	Stage 3A/Tier 3	Stage V/Tier 4	Stage 3A/Tier 3	Stage V/Tier 4	Stage 3A/Tier 3	Stage V/Tier 4
	7.2	Engine power	kW	142	149	142	149	142	149	142	149	142	149	142	149	142	149
	7.3	Rated speed	r/min	2300	2200	2300	2200	2300	2200	2300	2200	2300	2200	2300	2200	2300	2200
	7.4	Number of cylinders/displacement	(-)/l(cm³)	6/6700	6/6700	6/6700	6/6700	6/6700	6/6700	6/6700	6/6700	6/6700	6/6700	6/6700	6/6700	6/6700	6/6700
	7.9	Vehicle electrical system voltage	V	24	24	24	24	24	24	24	24	24	24	24	24	24	24
	7.10	Battery voltage/nominal capacity	V/Ah	2×12/120	2×12/120	2×12/120	2×12/120	2×12/120	2×12/120	2×12/120	2×12/120	2×12/120	2×12/120	2×12/120	2×12/120	2×12/120	2×12/120
		Rated torque	N·m/r/min	930/1500	990/1300	930/1500	990/1300	930/1500	990/1300	930/1500	990/1300	930/1500	990/1300	930/1500	990/1300	930/1500	990/1300
		Transmissions Manufacturer		ZF	ZF	ZF	ZF	ZF	ZF	ZF	ZF	ZF	ZF	ZF	ZF	ZF	ZF
Addition data		Transmissions Type		3WG161	3WG161	3WG161	3WG161	3WG161	3WG161	3WG161	3WG161	3WG171	3WG171	3WG171	3WG171	3WG171	3WG171
		Stage FWD/RVS		3/3	3/3	3/3	3/3	3/3	3/3	3/3	3/3	3/3	3/3	3/3	3/3	3/3	3/3
	10.1	Operating pressure for attachments	Mpa	25	25	25	25	25	25	25	25	25	25	25	25	25	25
	10.2	Oil volume for attachments	l/min	265	265	265	265	265	265	265	265	265	265	265	265	265	265
	10.3	Hydraulic Tank - capacity (drain & refill)	liter	320	320	320	320	320	320	320	320	360	360	360	360	360	360
	10.4	Fuel tank capacity	l/iter	320	280	320	280	320	280	320	280	360	320	360	320	360	320
	10.7	Sound pressure level at the driver's seat	dB (A)	78	78	78	78	78	78	78	78	78	78	78	78	78	78

14-18t X series mast:(Pneumatic)

Type	Model	Max. fork height	Overall height				Tilt Range	Capacity			
			Lowered		Extended			F/R	Load capacity at 900mm	Load capacity at 1200mm	Load capacity at 900/900/1200mm
			16t/1200 18t/900/1200	Others	16t/1200 18t/900/1200	Others	14t		14t	16t	18t
			mm	mm	mm	mm	mm		(°)	kg	kg
Wide view mast	GXR140/141/160/X180/163/180/183M300	3000	3400	3300	4900	4800	6/12	14000	14000	16000	18000
	GXR140/141/160/X180/163/180/183M330	3300	3550	3450	5200	5100	6/12	14000	14000	16000	18000
	GXR140/141/160/X180/163/180/183M360	3600	3700	3600	5500	5400	6/12	14000	14000	16000	18000
	GXR140/141/160/X180/163/180/183M400	4000	3900	3800	5900	5800	6/12	14000	14000	16000	18000
	GXR140/141/160/X180/163/180/183M430	4300	4100	4000	6250	6150	6/12	14000	14000	16000	18000
	GXR140/141/160/X180/163/180/183M450	4500	4200	4100	6450	6350	6/12	14000	14000	16000	18000
	GXR140/141/160/X180/163/180/183M480	4800	4350	4250	6750	6650	6/6	14000	14000	16000	18000
	GXR140/141/160/X180/163/180/183M500	5000	4450	4350	6950	6850	6/6	14000	14000	16000	18000
	GXR140/141/160/X180/163/180/183M550	5500	4750	4650	7500	7400	3/6	12500	12500	14500	16500
	GXR140/141/160/X180/163/180/183M600	6000	5000	4900	8000	7900	3/6	11000	11000	13000	15000
	GXR140/141/160/X180/163/180/183M650	6500	5300	5200	8550	8450	3/6	9500	9500	11500	13500

Capacity kg



Der Partner in
Ihrer Nähe

Hedemann GmbH
Oldenburger Straße 28
D-26639 Wiesmoor

Tel.: +49 (0) 49 44 / 14 50
Mail: kontakt@hedemann-stapler.de
Web: www.hedemann-stapler.de



Features

Transmission	Standard	Options
Pneumatic tyre	●	
Solid tyre		○
Steering system		
Fully hydraulic power steering	●	
Centralized lubrication system (machine)		○
Power system		
Extended exhaust pipe	●	
Lockable fuel cap		○
Spark arrester		○
Pre-cleaner air filter	●	
Truck		
Tow pin	●	
Electrostatic discharge chain		○
Rear-view mirror on right & left mudguards	●	
Operating system		
Integrated joystick	●	
Adjustable steering column	●	
Adjustable armrest	●	
Hydraulic system		
Variable hydraulic pump system	●	
Four-way hydraulic valve	●	
Cab		
Cabin	●	
Climate control system (air-conditioning and heater)	●	
Manual tilting cabin	●	
Electric tilting cabin		○
Radio	●	
Sunshade	●	
USB charging interface	●	
Clothes hanger hook	●	
Reading light	●	
1 x 24V power supply		○
1 x 12V power supply		○
License plate frame		○
Fan	●	
Lifting components		
Duplex mast	●	
Standard lifting height	●	
Optional lifting height		○
Standard fork	●	
Other fork specifications		○
Fork hook on type		○
Hydraulic Fork Positioning	●	
Independently-adjustable fork		○
Built in Sideshift	●	
Integrated sideshift		○
Other		
Standard color	●	
User defined colour		○
Fire extinguisher (2kg/4kg)		○
Vehicle toolkit	●	

Electrical System	Standard	Options
Operator Presense System (OPS) with buzzer	●	
LCD display screen	●	
Main power switch	●	
Emergency power off switch	●	
Maintenance-free 24V lead acid battery	●	
Reverse buzzer	●	
High decible horn	●	
LED lights (entire vehicle)	●	
2 x Working light on front mudguard	●	
2 x Front working light on top of cabin	●	
2 x Rear working light on top of cabin		○
2 x Working light on both sides of mast	●	
Reverse sensor	●	
rearview camera system		○
rearview camera system with memory		○
front & rearview camera system		○
front & rearview camera system with memory		○
4 directions camera system with single display		○
4 directions camera recording system with single display		○
In cabin CCTV		○
Rear blue safety light		○
Front and rear blue safety light		○
Three sided blue danger zone light		○
Overspeed alarm		○
Speed limitation		○
Voice reverse alarm		○
Automatic fire suppression system		○
Two-way radio		○
Weight indicator in display	●	
Flashing warning light (non rotating) with control switch		○
Tyre pressure monitoring	●	
On-board diagnostics system	●	
Engine fault alarm	●	
Engine oil pressure alarm indicator	●	
Air filter warning indicator	●	
Water temperature indicator	●	
Hour meter	●	
Battery charge indicator	●	
Low hydraulic pressure alarm indicator	●	
Hydraulic oil filter warning indicator	●	
Oil gauge	●	
Fuel-water separator warning indicator	●	
Oil temperature gauge	●	
Pre-heat indicator	●	
Drive mode indicator	●	
Parking brake indicator	●	
Service indicator	●	